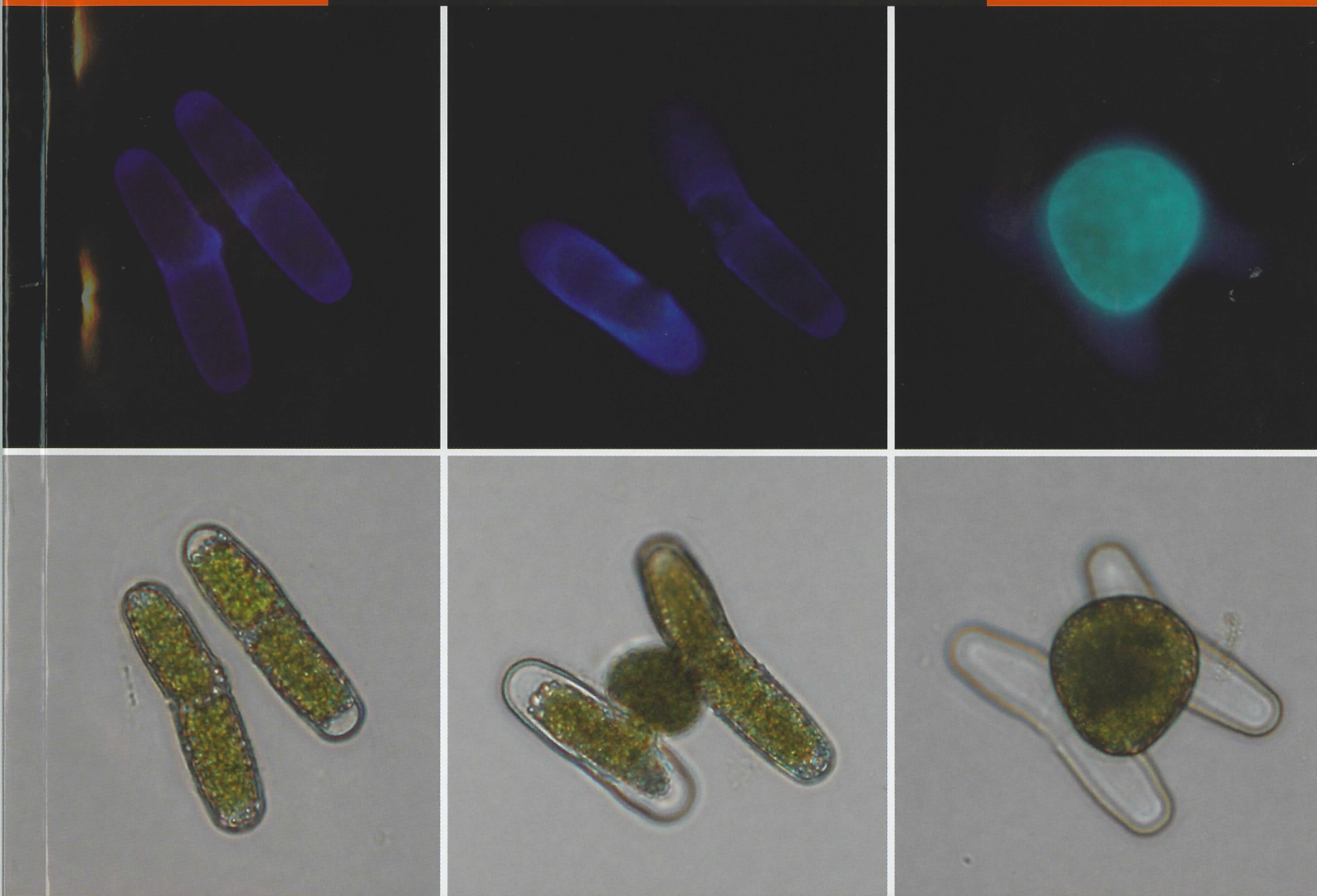


Phycological Research

Volume 59 • Issue 1 • January 2011

ISSN 1322-0829




WILEY-
BLACKWELL

The Japanese
Society of
Phycology

Phycological Research

EDITOR-IN-CHIEF

Ichiro Mine

Graduate School of Kuroshio Science, Kochi University, Japan

ASSOCIATE EDITORS

Olivier De Clerck
Biology Department,
Ghent University,
Belgium

Daisuke Honda
Department of Biology,
Faculty of Science and
Engineering, Konan
University, Japan

Mona Hoppenrath
Senckenberg Research
Institute, German
Centre for Marine
Biodiversity Research,
Germany

Matthew L. Julius
Department of Biological
Sciences, St. Cloud
State University, USA

Mitsunobu Kamiya
Department of Marine
Bioscience, Faculty of
Biotechnology, Fukui
Prefectural University,
Japan

Ulf Karsten
Institute of Biological
Sciences, University of
Rostock, Germany

Christos Katsaros
Department of Botany,
Faculty of Biology,
University of Athens,
Greece

Masanobu Kawachi
Environmental Biology
Division, National
Institute for
Environmental Studies,
Japan

Gwang Hoon Kim
Department of Biology,
Kongju National
University, Korea

Jeong Ha Kim
Department of
Biological Sciences,
Sungkyunkwan
University, Korea

Showe-Mei Lin
Institute of Marine
Biology, National
Taiwan Ocean
University, Taiwan

Shigeki Mayama
Department of Biology,
Tokyo Gakugei
University, Japan

Hideaki Miyashita
Department of
Interdisciplinary
Environment, Graduate
School of Human and
Environmental Studies,
Kyoto University, Japan

Taizo Motomura
Field Science Center for
Northern Biosphere,
Hokkaido University,
Japan

Wendy Nelson
National Centre of
Aquatic Biodiversity
and Biosecurity,
New Zealand

Hiroyuki Sekimoto
Department of Chemical
and Biological Sciences,
Faculty of Science,
Japan Women's
University, Japan

John West
School of Botany,
University of
Melbourne, Australia

Giuseppe C. Zuccarello
School of Biological
Sciences, Victoria
University of Wellington,
New Zealand

This journal is available online at *Wiley Online Library*. Visit wileyonlinelibrary.com to search the articles and register for table of contents email alerts.

Access to this journal is available free online within institutions in the developing world through the AGORA initiative with the FAO, and the OARE initiative with UEP. For information, visit <http://www.aginternetwork.org>, www.oarescience.org.

AIMS AND SCOPE *Phycological Research* is published by the Japanese Society of Phycology and complements the *Japanese Journal of Phycology*. The Journal publishes international, peer-reviewed research dealing with all aspects of phycology to facilitate the international exchange of results. All articles are peer-reviewed by at least two researchers expert in the field of the submitted paper. *Phycological Research* has been credited by the International Association for Plant Taxonomy for the purpose of registration of new non-vascular plant names (including fossils). For further information see <http://bgbm3.bgbm.fu-berlin.de/iapt/registration/journals/htm>.

ABSTRACTING AND INDEXING SERVICES This journal is indexed by Aquatic Sciences & Fisheries Abstracts, BIOBASE, Biological Abstracts, BIOSIS Previews, Biotechnology & Bioengineering Abstracts, Cambridge Scientific Abstracts, Chemical Abstracts Service, Current Awareness in Biological Sciences, Current Contents, Ecological Abstracts, EMBASE/Excerpta Medica, Environmental Sciences and Pollution Management, GEOBASE, Irrigation and Drainage Abstracts, Microbiology Abstracts, Oceanic Abstracts, Pollution Abstracts, ProQuest (previously University Microfilms), Referativnyi Zhurnal, Science Citation Index (ISI), Soils and Fertilizers, Weed Abstracts, Zoological Record, National Inquiry Services Centre (NISC).

THE JAPANESE SOCIETY OF PHYCOLOGY We invite anyone who is interested in any aspect of phycology to become a member of the Society. As a member you will receive *Phycological Research* and the *Japanese Journal of Phycology* free of charge. The annual membership fee for individuals ¥8000. Members who reside outside Japan will receive only the English language journal *Phycological Research* and the annual membership fee is ¥7000 (standard), ¥5000 (student).

Those who wish to join the Society should send the application form (at the back of each issue of the Journal), together with payment, to the Membership Secretary, Dr Chikako Nagasato, at the address given on the form. Members who wish to claim for missing or damaged issues should contact the Membership Secretary.

ADDRESS FOR EDITORIAL CORRESPONDENCE Ichiro Mine, Graduate School of Kuroshio Science, Kochi University, 2-5-1 Akebono-cho, Kochi, Kochi 780-8520, Japan (E-mail: mine@kochi-u.ac.jp).

DISCLAIMER The Publisher, Society and Editors cannot be held responsible for errors or any consequences arising from the use of information contained in this journal; the views and opinions expressed do not necessarily reflect those of the Publisher, Society and Editors, neither does the publication of advertisements constitute any endorsement by the Publisher, Society and Editors of the products advertised.

Copyright © 2011 Japanese Society of Phycology.

Cover Conjugation process of *Penium margaritaceum*. Upper panel: epifluorescence showing cell wall stained with calcofluor white. Lower panel: bright field. See article by Tsuchikane *et al.* in this issue for detail.

Note to NIH Grantees

Pursuant to NIH mandate, Wiley-Blackwell will post the accepted version of contributions authored by NIH grant-holders to PubMed Central upon acceptance. This accepted version will be made publicly available 12 months after publication. For further information, see www.wiley.com/go/nihmandate.

For submission instructions, subscription and all other information visit <http://wileyonlinelibrary.com/journal/pre>

ISSN 1322-0829 (Print) ISSN 1440-1835 (online)

The Japanese Society of Phycology

Officers for 2011-2012

President: Takeo Horiguchi *Hokkaido University, Japan*

Secretary: Kazuhiro Kogame *Hokkaido University, Japan*

Treasurer: Tsuyoshi Abe *Hokkaido University, Japan*

Membership Secretary: Chikako Nagasato *Hokkaido*

University, Japan; Shinya Yoshikawa *Fukui Prefectural University, Japan*

Public Relations Secretary: Yukimasa Yamagishi *Fukuyama University, Japan*

Secretary for International Affairs: Shinya Uwai *Niigata University, Japan*

Members of Executive Council 2011-2012

Put O. Ang Jr. *The Chinese University of Hong Kong, China*

Alan T. Critchley *Acadian Seaplants Limited, Canada*

Shinji Handa *Hiroshima Environment & Health Association, Japan*

Isao Inouye *University of Tsukuba, Japan*

Mitsunobu Kamiya *Fukui Prefectural University, Japan*

Shigeo Kawaguchi *Kyushu University, Japan*

Hiroshi Kawai *Kobe University, Japan*

Taiju Kitayama *National Museum of Nature and Science, Japan*

Shinichi Miyamura *University of Tsukuba, Japan*

Taizo Motomura *Hokkaido University, Japan*

Noboru Murase *National Fisheries University, Japan*

Takashi Nakada *Keio University, Japan*

Yukihiko Serisawa *University of Yamanashi, Japan*

Satoshi Shimada *Ochanomizu University, Japan*

Jiro Tanaka *Tokyo University of Marine Science and Technology, Japan*

Ryuta Terada *Kagoshima University, Japan*

Hajime Yasui *Hokkaido University, Japan*

Ikuo Yoshinaga *Kyoto University, Japan*

JOIN THE JAPANESE SOCIETY OF PHYCOLOGY AND RECEIVE FOUR ISSUES OF PHYCOLOGICAL RESEARCH PER YEAR FREE OF CHARGE

The Japanese Society of Phycology, founded in 1952, currently has 760 members (including 105 overseas members). The Society is open to anyone who is interested in pure or applied aspects of phycology.

Application for membership

(Please type or write in block letters)

Membership starts from 2011

Name in full: _____, _____
(Family name) (Given name and initials)

Mailing address: _____

Telephone: _____ Fax: _____
(Postal code) (Country)

E-mail: _____ Interests: _____

Signature: _____ Date: _____

The annual fee for individual members is ¥8000

(¥7000 for members who reside outside Japan, ¥5000 for students who submit a verifying statement signed by their Chairperson or Head of Department)

Payment by: ☐ Visa ☐ MasterCard ☐ American Express

Card number: _____ - _____ - _____ - _____ Expiry date: _____

Signature: _____

☐ International giro postal transfer (Postal Account No.: 01320-4-48748)

☐ International postal money order

Send application form to: Dr Chikako Nagasato

Muroran Marine Station

Field Science Center for Northern Biosphere

Hokkaido University

Muroran 051-0003, Japan

Fax: +81-143-22-4135

Email: jsp@wwwsoc.nii.ac.jp

Phycological Research

Volume 59 • Issue 1 • January 2011

Masaki Yoshida, Yamato Yoshida, Takayuki Fujiwara, Osami Misumi, Haruko Kuroiwa and Tsuneyoshi Kuroiwa <i>Proteomic comparison between interphase and metaphase of isolated chloroplasts of Cyanidioschyzon merolae (Cyanidiophyceae, Rhodophyta)</i>	1
Alison R. Sherwood, Akira Kurihara and Kimberly Y. Conklin <i>Molecular diversity of Amansieae (Ceramiales, Rhodophyta) from the Hawaiian Islands: a multi-marker assessment reveals high diversity within Amansia glomerata</i>	16
Gregory N. Nishihara, Ryuta Terada and Hiromori Shimabukuro <i>Effects of wave energy on the residence times of a fluorescent tracer in the canopy of the intertidal marine macroalgae, Sargassum fusiforme (Phaeophyceae)</i>	24
Sang-Rae Lee, Jung Hyun Oak, Yeon-Shim Keum, Jin Ae Lee and Ik Kyo Chung <i>Utility of rbcS gene as a novel target DNA region for brown algal molecular systematics</i>	34
Yasuo Suto and Shuji Ohtani <i>Morphological features and chromosome numbers in cultures of five Cephaleuros species (Trentepohliaceae, Chlorophyta) from Japan</i>	42
Ken-ichiro Ishida, Akinori Yabuki and Shuhei Ota <i>Research note: Amorphochlora amoebiformis gen. et comb. nov. (Chlorarachniophyceae)</i>	52
Jeffrey D. Leblond, Shannon A. Roche, Nicole M. Porter, James C. Howard and Norma K. Dunlap <i>Sterol biosynthesis in the harmful marine dinoflagellate, Karenia brevis: Identification of biosynthetic intermediates produced during exposure to the fungicide fenpropidine</i>	54
Ricardo G. Bahia, Rafael Riosmena-Rodriguez, Gavin W. Maneveldt and Gilberto M. Amado Filho <i>Research note: First report of Sporolithon ptychoides (Sporolithales, Corallinophycidae, Rhodophyta) for the Atlantic Ocean</i>	64
Ichiro Mine, Chie Ozaki, Satoko Sekida and Kazuo Okuda <i>Research note: Induction of gamete discharge by hypertonic treatment in the green alga Bryopsis plumosa (Caulerpales, Chlorophyta)</i>	70
Yuki Tsuchikane, Miki Tsuchiya, Yume Kokubun, Jun Abe and Hiroyuki Sekimoto <i>Conjugation processes of Penium margaritaceum (Zygnemophyceae, Charophyta)</i>	74
